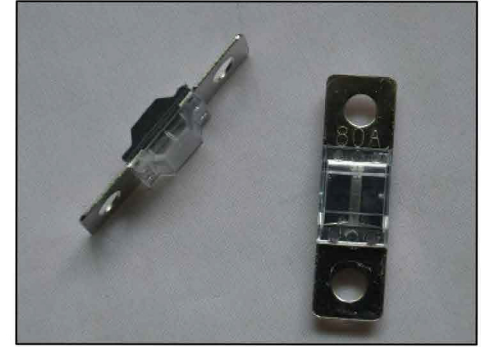
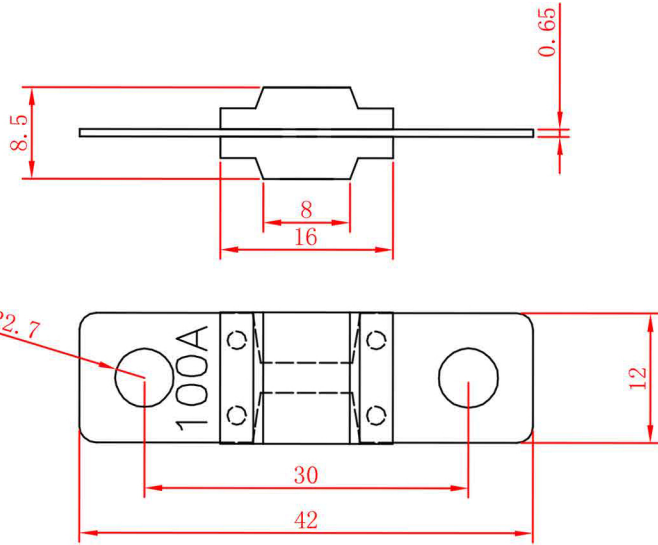


ALL INFORMATION CONTAINED OR DISCLOSED BY THIS DOCUMENT IS CONSIDERED CONFIDENTIAL AND PROPRIETARY BY ANDU ELECTRONICS CO.,LTD. ALL DESIGN, MANUFACTURING, USE, REPRODUCTION, AND ALL SALES RIGHTS, ARE EXPRESSLY RESERVED BY ANDU TO ANDU ELECTRONICS CO.,LTD. AND COMMUNICATION OF THIS INFORMATION TO OTHERS IS PROHIBITED WITHOUT THE PRIOR WRITTEN CONSENT OF Sellifuse

DRAWING REVISIONS				
REV	S/N	DESCRIPTION	APPROVED	DATE
A	20091210-011	ORIGINAL RELEASE		



10	32V	150A	ANS-150
9	32V	125A	ANS-125
8	32V	100A	ANS-100
7	32V	80A	ANS-80
6	32V	70A	ANS-70
5	32V	60A	ANS-60
4	32V	50A	ANS-50
3	32V	40A	ANS-40
2	32V	35A	ANS-35
1	32V	30A	ANS-30
ITEM	Voltage rating	RATING	ASSEMBLY P/N

NOTES: UNLESS OTHERWISE SPECIFIED.

- the fuses shown are for in motor vehicles, boats and trailers to protect electrical wiring and vehicles. This standard is for the construction shown and is not intended to restrict the design and use of other configurations and materials capable of meeting the vehicle requirements.
- A fuse is a device designed to interrupt the electrical circuit when subjected to overcurrents. This action is to be nonreversible and the fuse is intended to be replaced after the circuit, malfunction has been corrected. capable of meeting the vehicle requirements.
- Functional Characteristics

TESTING CURRENT	BLOW TIME LIMIT
100%	100Hr. minimum
110%	4Hr. minimum
150%	90seconds-3600seconds
200%	5seconds -100seconds
300%	0.5sec-15sec

4. Standard: ISO8820-5; UL248;

Dongguan Aolittel Electronic Technology Co., Ltd.

UNLESS OTHERWISE STATED		ANS bolt-on Fuse				1.5:1	
WALL THICKNESS	MM	DSGN	Tommy	07-12-09	SCALE	free	
LINEAR	±0.15 MM	DFTS	Tommy	07-12-09	SHEET	1 OF 1	
LINEAR	±0.05 MM	CHKD			PART NO.		REV
ANGULAR	±0.5 DEG	APPD			ANS		A
DRAFT ANGLE/SIDE	0.5 ° MAX						
BURR & FLASH	0.10 MAX						
BREAK CORNERS	0.20 R. MAX						
PARTING LINE MISMATCH	0.05 MAX						